

Operating Instructions

FarmPilot-Uploader

Version: V2.20120206



31302736-02-EN

Read and follow these operating instructions.

Keep these operating instructions in a safe place for later reference.

Imprint

Document

Operating Instructions
Product: FarmPilot-Uploader
Document number: 31302736-02-EN
From software version: 1.2.0.0
Original language: German

Copyright ©

Müller-Elektronik GmbH & Co.KG
Franz-Kleine-Straße 18
33154 Salzkotten
Germany
Phone: ++49 (0) 5258 / 9834 - 0
Fax: ++49 (0) 5258 / 9834 - 90
Email: info@mueller-elektronik.de
Homepage: <http://www.mueller-elektronik.de>

Table of contents

1	Functionalities and installation	4
1.1	Functionalities	4
1.2	Installing the software	4
1.3	Changing the language	5
2	Configuring the software	7
2.1	Initial start-up	7
2.2	Screen "FarmPilot-Uploader: Settings"	7
2.3	Configuring the connection with FarmPilot	8
2.4	Configuring proxy connection	8
2.5	Downloading display list	9
2.6	Creating task folders	9
2.7	Back-up copies of sent task sets	10
3	Operating the software	11
3.1	Sending task sets to the portal	11
3.2	Downloading task sets from the portal	11

1 Functionalities and installation

1.1 Functionalities

The FarmPilot-Uploader is a small program you can use for sending task sets between the Farm Management Information System and FarmPilot portal.

Available functionalities:

- Automatic transmission of task sets to FarmPilot portal.
- Automatic transmission of task sets to the display of an employee.
- Automatic download of completed task sets from the FarmPilot portal.

1.2 Installing the software

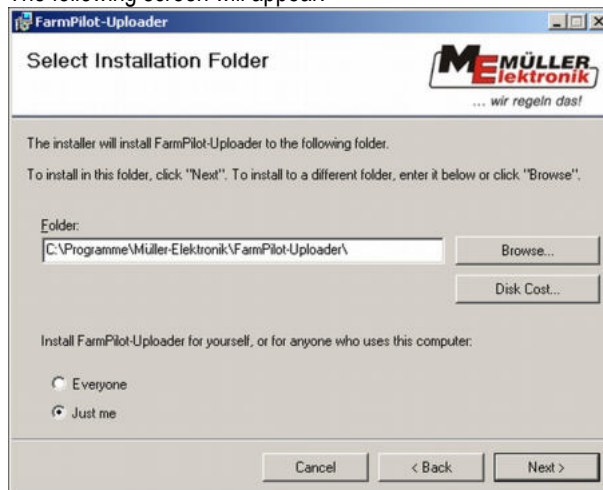
Procedure

This is how you install the software:

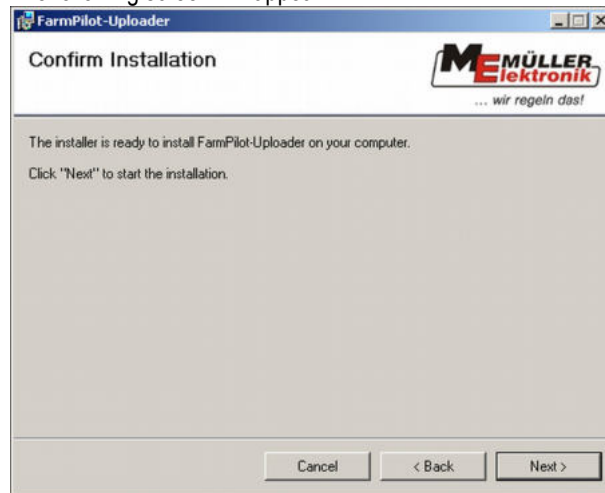
1. Open the folder with installation files.
2. Run the "Setup.exe" file with a double click.
⇒ Start Setup Assistant:



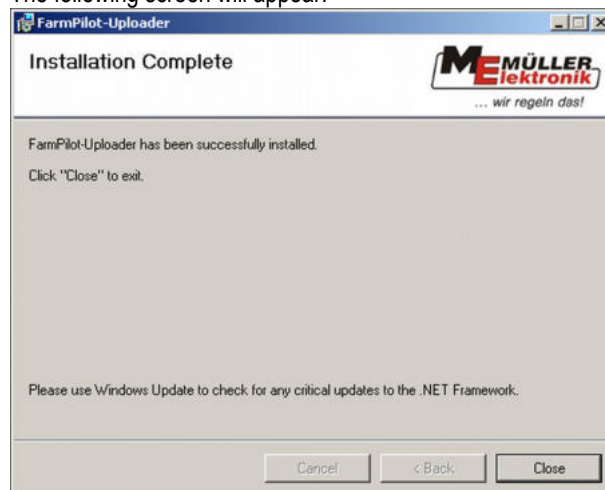
3. Click "Next" to continue installation.
⇒ The following screen will appear:



4. In the "Folder" box enter the required location for the installation. You can also click "Search" to find the folder in which you wish to install the software.
5. Click "Next" to continue installation.
⇒ The following screen will appear:



6. Click "Next" to continue installation.
⇒ The following screen will appear:



7. Click "Close" to finish installation.
⇒ You have installed the software.

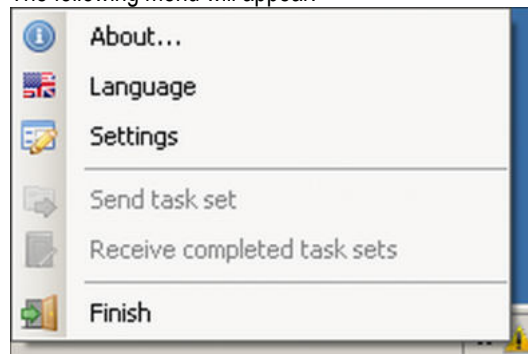
1.3 Changing the language

Procedure

You can change the language as follows:

1. Start "FarmPilot-Uploader".
2. Click on the software icon in the notification area with the right mouse button.

⇒ The following menu will appear:



3. Click on "Sprache" ("Language").

⇒ The following screen will appear:



4. Select the desired language.

5. Click "OK".

6. Restart the software.




2 Configuring the software

2.1 Initial start-up

Procedure This is how you start the FarmPilot-Uploader software:

1. Start FarmPilot-Uploader from the start menu.
The standard path is:
Start / Programs / Müller-Elektronik / FarmPilot-Uploader / FarmPilot-Uploader
⇒ In the Windows notification area, next to the clock, the software icon will appear.
⇒ You have started the software.

Icons The software can be identified in the notification area with one of these icons:

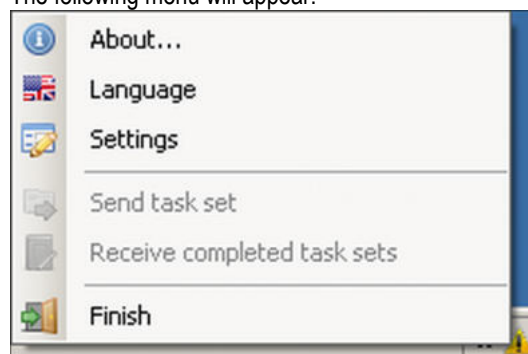
Icon	Meaning
	The software is configured and runs in the background.
	No connection to FarmPilot portal.
	The FarmPilot portal file upload screen has been called up.

2.2 Screen "FarmPilot-Uploader: Settings"

The software is configured in the "FarmPilot-Uploader: Settings" screen.

Procedure This is how you open the "FarmPilot-Uploader: Settings" screen:

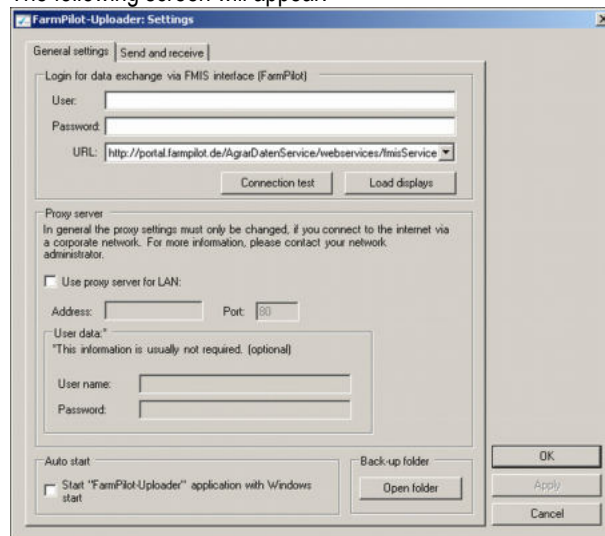
1. Start "FarmPilot-Uploader".
2. Click on the software icon in the notification area with the right mouse button.
⇒ The following menu will appear:



You can choose in the context menu which window shall be opened.

3. Click on "Settings".

⇒ The following screen will appear:



⇒ You have opened "FarmPilot-Uploader: Settings".

2.3 Configuring the connection with FarmPilot

First you must configure the connection with FarmPilot.

Procedure

This is how configure the connection with FarmPilot:

1. Open the following screen: "FarmPilot-Uploader: Settings".
2. In the "User" input box enter the user name you wish to use for the FarmPilot application on the portal.
3. In the "Password" input box enter the password for the portal.
4. Click on "Connection test".
 - ⇒ Connection will be tested.
 - ⇒ As soon as the following menu appears, you have successfully established the connection: "Connection established successfully!".
 - ⇒ If you need to set a proxy connection, read chapter: Configuring proxy connection [→ 8]
5. Alternatively, you can check "Auto start", so that the software will be started automatically with each start of your Windows operating system.
6. Click "OK".

⇒ You have configured the connection. The software icon in the Windows notification will change.

2.4 Configuring proxy connection

If your computer is part of a corporate network, you may need to establish connection via a proxy server.

Your system administrator will provide required data.

Procedure

This is how you set up connection via a proxy server:

1. Open the following screen: "FarmPilot-Uploader: Settings".
2. Check "Use proxy server for LAN".

3. Enter proxy server address and port.
4. Enter user name and password for the proxy server connection.
5. Click on "Connection test".
 - ⇒ Connection will be tested.
 - ⇒ As soon as the following menu appears, you have successfully established the connection: "Connection established successfully!".
6. Click "OK".
 - ⇒ You have configured the connection. The software icon in the Windows notification will change.

2.5 Downloading display list

To be able to clearly allocate task sets, you need to download a list with display addresses.

Procedure

This is how you download the display list:

- You are connected with the portal.
 - You have created at least one display on the portal.
1. Open the following screen: "FarmPilot-Uploader: Settings"
 2. Click "Load displays".
 - ⇒ A display list will be downloaded.
- ⇒ The list will appear under tab: "Send and receive".

2.6 Creating task folders

You need to create two folders, so that the software can automatically send and receive task sets.

For FarmPilot-Uploader the names of folders do not matter. Create a name which will match the requirements of the Farm Management Information System.

Required folders:

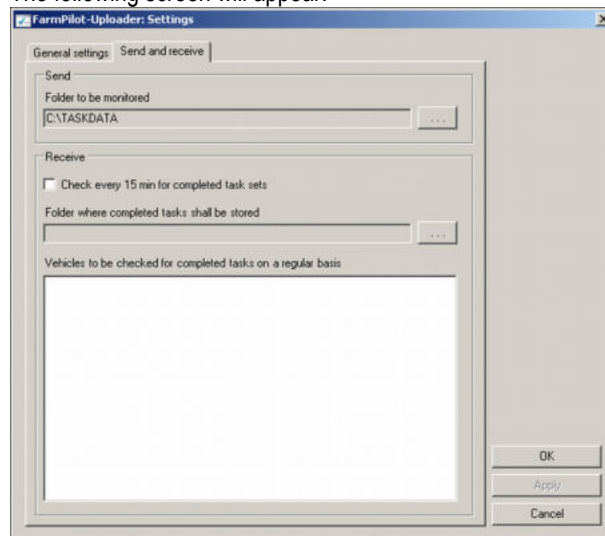
- Folder to be monitored by the software. All tasks from this folder will be sent to the portal.
- Folder for storing downloaded tasks.



Procedure

This is how you connect the folders with the software:

1. Open the following screen: "FarmPilot-Uploader: Settings"
2. Click the "Send and receive" tab.

⇒ The following screen will appear:



3. Click the  button in the "Send" area.
4. Select a folder in which the tasks you wish to send to the portal are stored.
5. Click the  button in the "Receive" area.
6. Select a folder in which all downloaded tasks shall be stored.

2.7 Back-up copies of sent task sets

The software creates back-up copies of all tasks sent to the portal. The back-up copies are located in the "Back-up" folder.

Procedure

This is how you open the "Back-up" folder.

1. Open the following screen: "FarmPilot-Uploader: Settings"
2. Click "Open folder".
 - ⇒ Windows Explorer with the content of the "Back-up" folder will open.

3 Operating the software

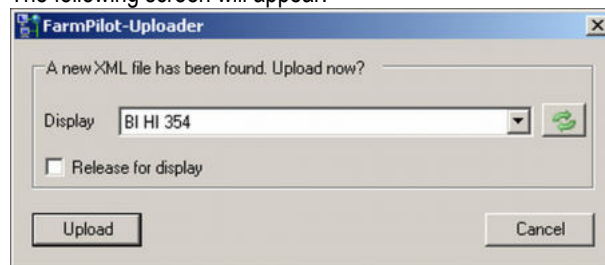
3.1 Sending task sets to the portal

You can send separate tasks or entire task sets to the portal.

Procedure

This is how you send task sets to the portal:

- You have configured the software. [→ 7]
- FarmPilot-Uploader has been started.
- 1. Create a task set in the Farm Management Information System.
- 2. Export the task set from the Farm Management Information System.
 - ⇒ The Farm Management Information System saves the task set in the "Folder to be monitored".
 - ⇒ The following screen will appear:



- 3. In the "Display" list select the display for which you have created the task set.
- 4. To be able to send the task set directly to the display, check "Release for display".
 - ⇒ This setting will cause the task set being automatically released and sent to the display after being sent to the portal. Then you no longer need to start the portal.
- 5. Click "Upload".
 - ⇒ The task set will be sent.
 - ⇒ All data you have sent will be deleted from the "Folder to be monitored" folder and moved to the "Back-up" folder.

3.2 Downloading task sets from the portal

You can download only task sets marked on the portal as "finished tasks".

Procedure

This is how you manually download task sets:

- You have configured the software.
- 1. Open the software context menu with the right mouse button.
- 2. Click "Receive completed task sets".
 - ⇒ When task sets are ready for download, they will be downloaded and saved in the folder you have selected in the "Receive" area of the "FarmPilot-Uploader: Settings" screen.
 - ⇒ Each task set will be saved as a zip file.
 - ⇒ The software will automatically unpack the zip files and create a sub-folder for each task set.
 - ⇒ On the FarmPilot portal these tasks will be deleted.
 - ⇒ You have downloaded the tasks.